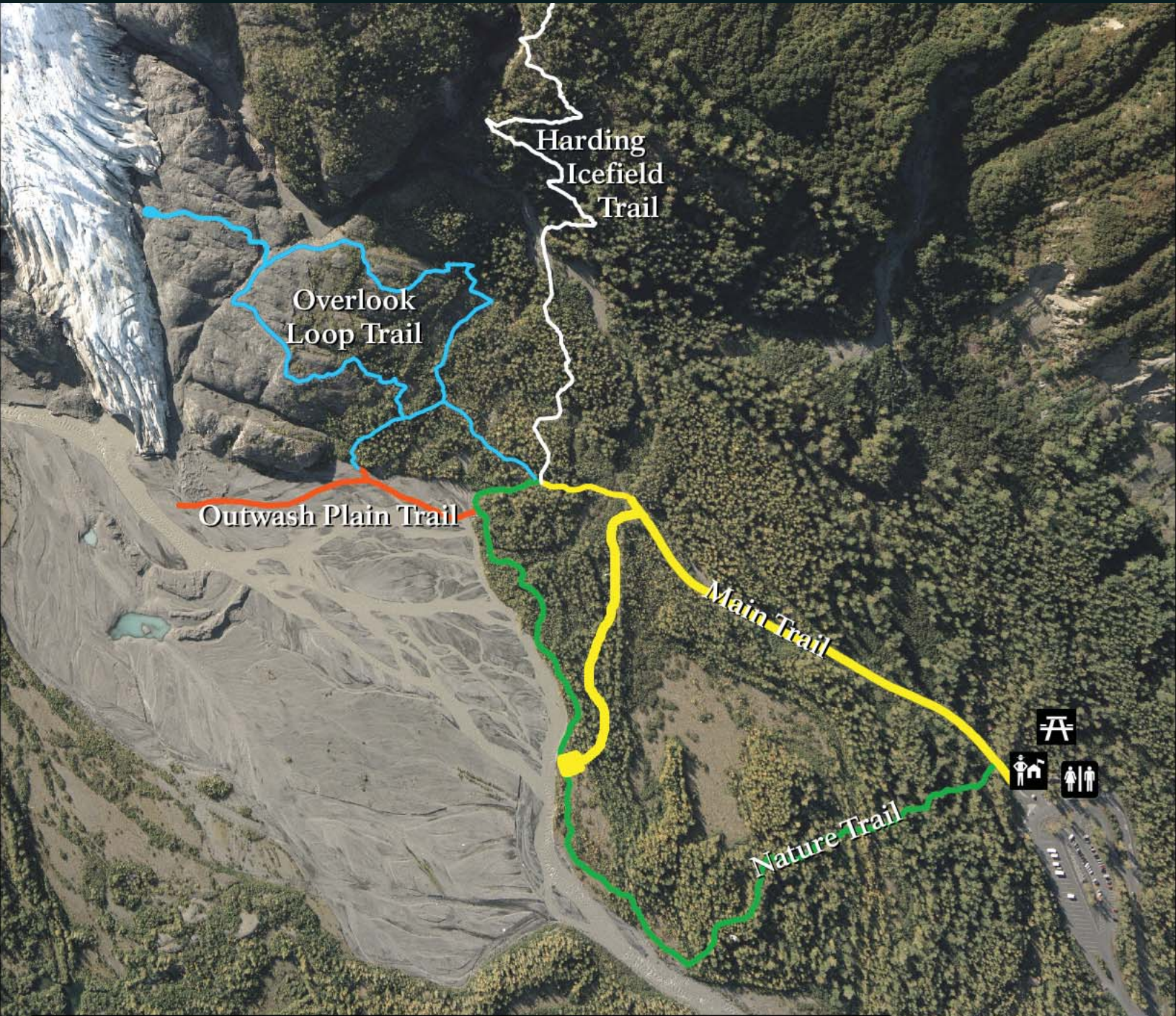
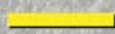






# Kenai Fjords National Park

## Exit Glacier Trails



### LEGEND

-  Main Trail: 0.5 miles - Easy (handicap accessible)
-  Nature Trail: 0.75 miles - Easy
-  Outwash Plain Trail: 0.25 miles - Easy
-  Overlook Loop Trail: 0.75 miles - Moderate
-  Harding Icefield Trail: 3.86 miles (one-way) - Strenuous